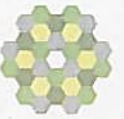
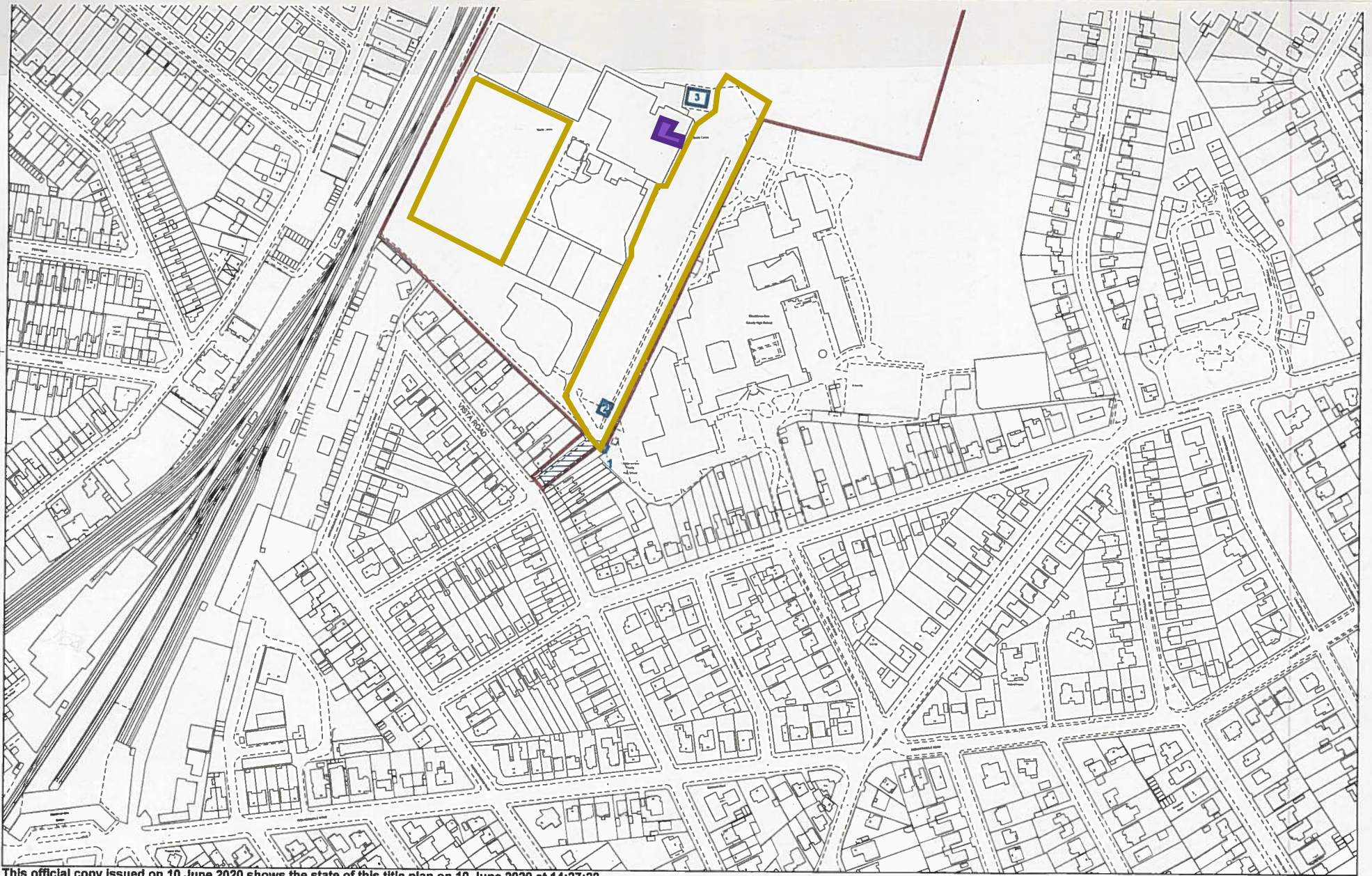
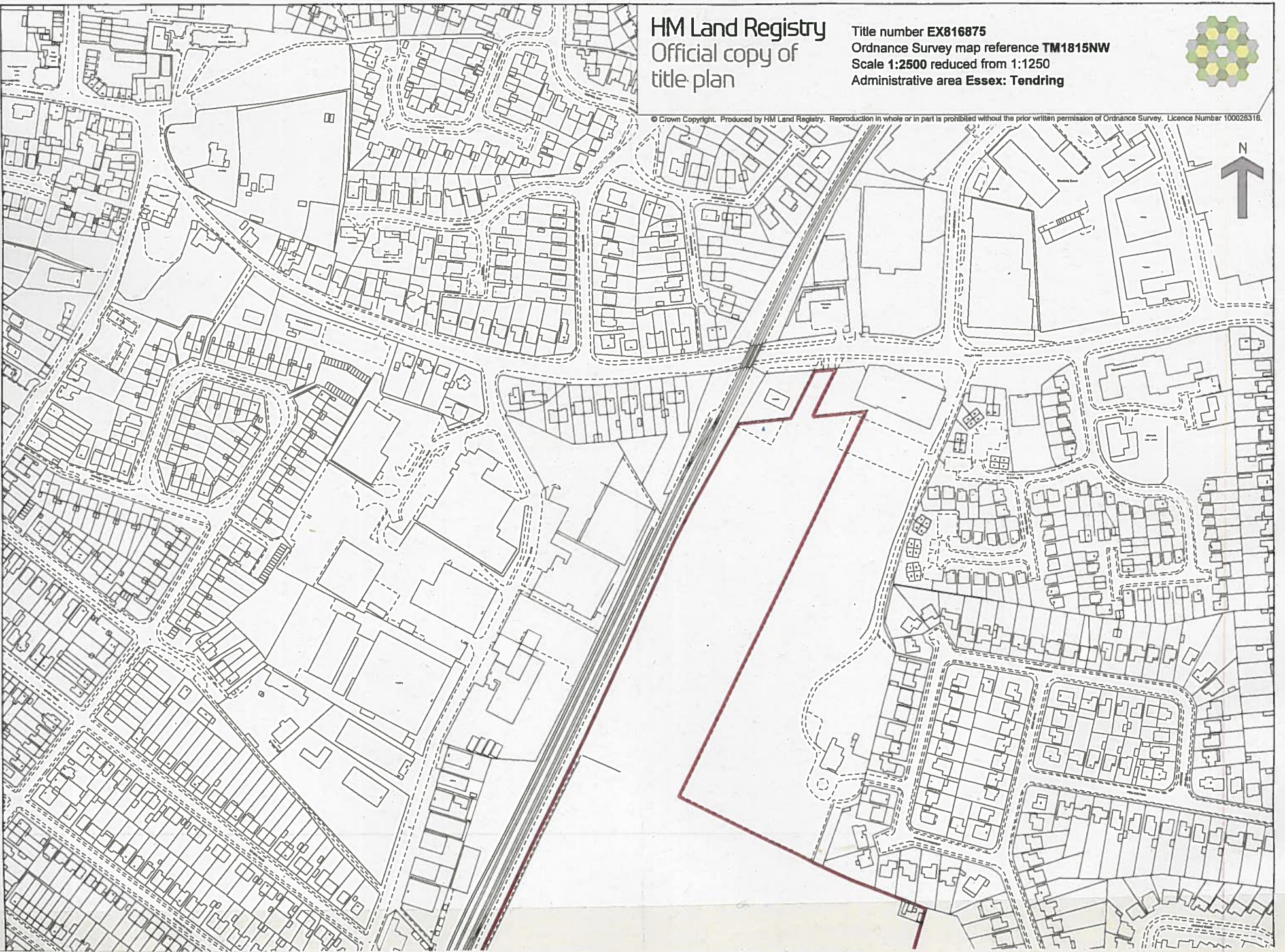


HM Land Registry  
Official copy of  
title plan

Title number EX816875  
Ordnance Survey map reference TM1815NW  
Scale 1:2500 reduced from 1:1250  
Administrative area Essex: Tendring



© Crown Copyright. Produced by HM Land Registry. Reproduction in whole or in part is prohibited without the prior written permission of Ordnance Survey. Licence Number 100028316.



This official copy issued on 10 June 2020 shows the state of this title plan on 10 June 2020 at 14:27:22.  
It is admissible in evidence to the same extent as the original (s.67 Land Registration Act 2002).

This title plan shows the general position, not the exact line, of the boundaries. It may be subject to distortions in scale. Measurements scaled from this plan may not match measurements between the same points on the ground.  
This title is dealt with by HM Land Registry, Durham Office.